

Program details

ARTICLE NUMBER

ggu-04-021

OPERATING SYSTEM

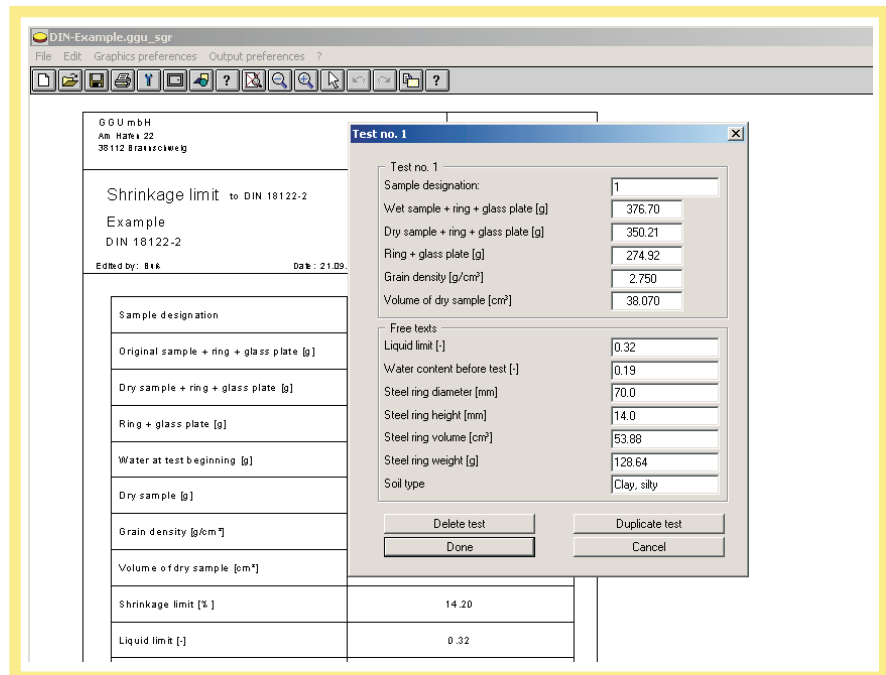
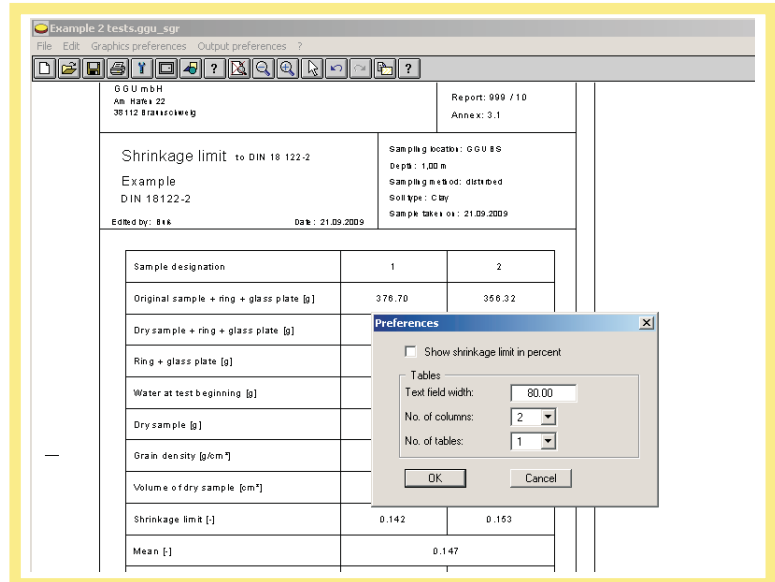
Windows 2000/XP/Vista/7

Description

GGU-SHRINKAGE – Evaluation and visualisation of tests to determine shrinkage limit to German Standard DIN 18122 (Part 2).

Capabilities:

- Input of max. 24 individual tests
- Table layout according to the number of tests
- Mean determination for each table
- Visualisation of shrinkage limit in per cent or as absolute values
- User-designed output sheet
- Print and copy screen sections, e.g. for transfer to a word processor
- Integrated Mini-CAD system for additional annotation of graphics



GGU mbH
Am Hafen 22
38112 Braunschweig

Report: 999 / 10

Annex: 3.1

Shrinkage limit to DIN 18122-2

Example
DIN 18122-2

Edited by: Buß

Date: 21.09.2009

Sampling location: GGU BS

Depth: 1,00 m

Sampling method: disturbed

Soil type: Clay

Sample taken on: 21.09.2009

Sample designation	1
Original sample + ring + glass plate [g]	376.70
Dry sample + ring + glass plate [g]	350.21
Ring + glass plate [g]	274.92
Water at test beginning [g]	26.490
Dry sample [g]	75.29
Grain density [g/cm ³]	2.75
Volume of dry sample [cm ³]	38.07
Shrinkage limit [%]	14.20
Liquid limit [-]	0.32
Water content before test [-]	0.19
Steel ring diameter [mm]	70.0
Steel ring height [mm]	14.0
Steel ring volume [cm ³]	53.88
Steel ring weight [g]	128.64
Soil type	Clay, silty