

Description

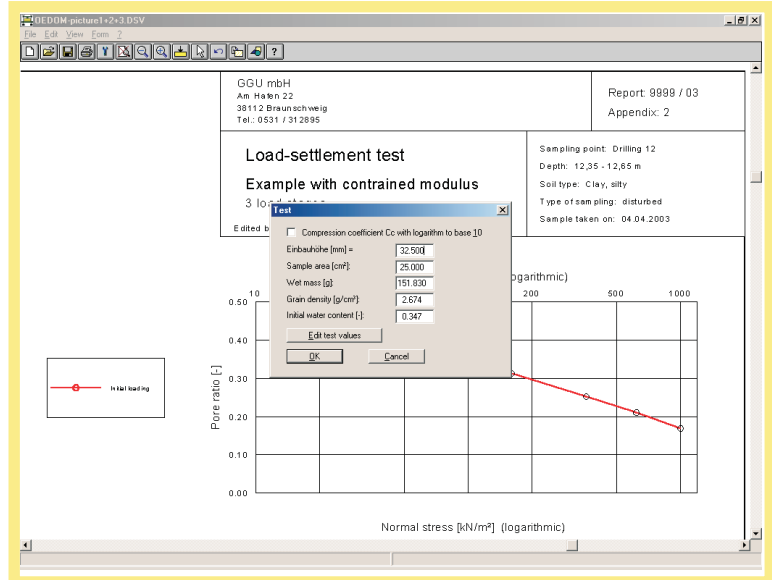
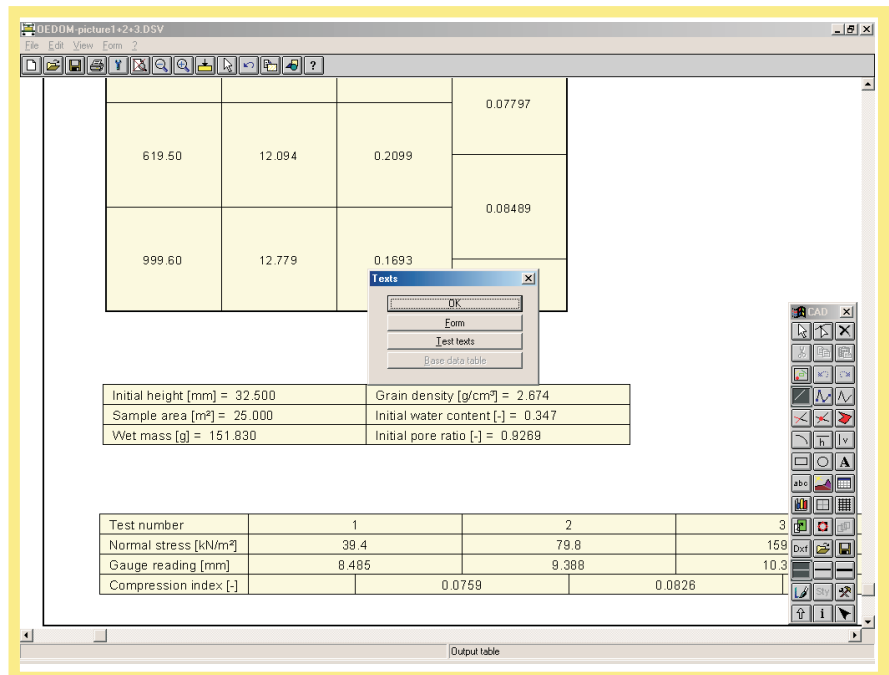
GGU-OEDOM - evaluation and presentation of compression tests to determine deformation behaviour due to constrained stress changes, and to determine the constrained modulus.

Capabilities:

- Presentation of load-settlement diagrams
- Presentation of constrained modulus diagrams
- Presentation of test data in table form
- Various presentation methods for constrained modulus curves
- Axis division (normal stress) linear, logarithmic, or to a root scale

A MiniCAD system is available for additional labelling of graphics. The output of the results in a protocol or as a diagram can be carried out on the screen, or to a printer or plotter.

As data input is in accordance with Windows conventions it can be learnt almost without the use of a handbook. The graphic output supports the true-type-fonts provided by Windows, so that you can be sure of an excellent layout. Colour output and bitmap graphics are supported.

619.50	12.094	0.2099	0.07797
999.60	12.779	0.1693	0.08489

Initial height [mm] = 32.500	Grain density [g/cm³] = 2.674
Sample area [m²] = 25.000	Initial water content [-] = 0.347
Wet mass [g] = 151.830	Initial pore ratio [-] = 0.9269

Test number	1	2	3
Normal stress [kN/m²]	39.4	79.8	159
Gauge reading [mm]	8.485	9.388	10.3
Compression index [-]		0.0759	0.0826

