

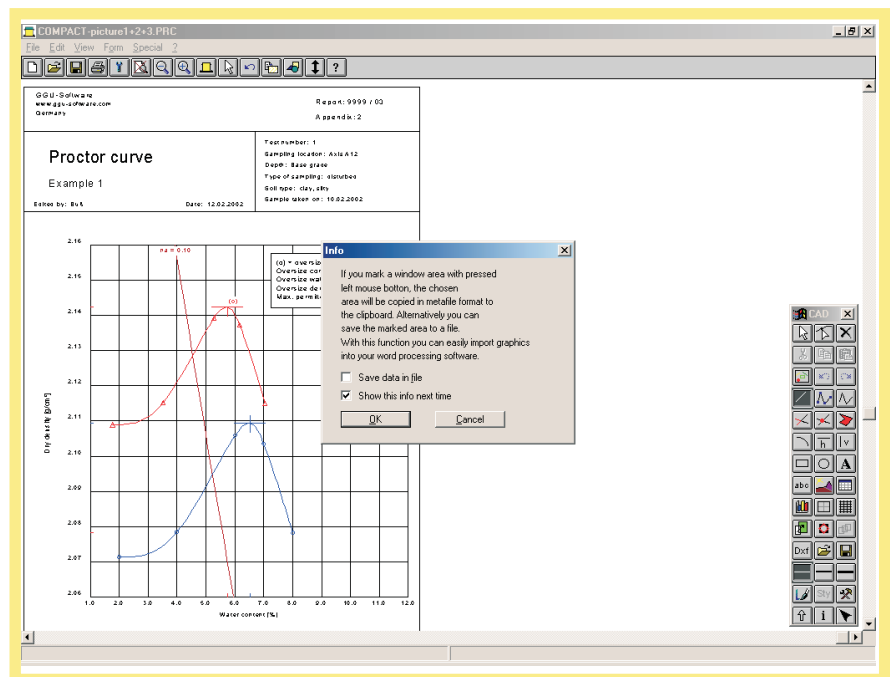
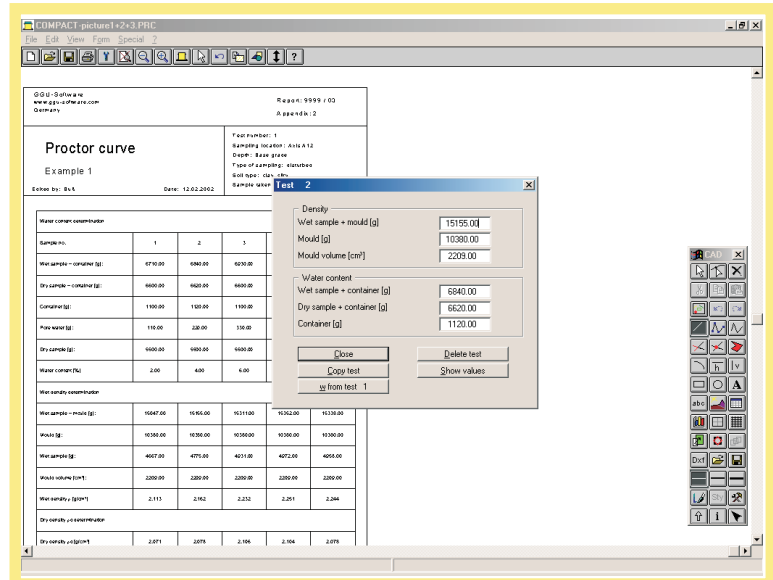
Description

GGU-COMPACT - evaluation and presentation of Proctor compaction tests

Capabilities:

- Presentation of zero air space curve
- Presentation of air space curve
- 4 separate smoothing out procedures
- Presentation of the corrected proctor curve for coarse grained soils with over-coarse grain
- Input of individual densities
- Protocol output
- Loading of up to five "extra" tests
- Free design of form

As data input is in accordance with Windows conventions it can be learnt almost without the use of a handbook. The graphic output supports true-type fonts, colour output and bitmap graphics.



GGU-Software
www.ggu-software.com
Germany

Report: 9999 / 03
Appendix: 2

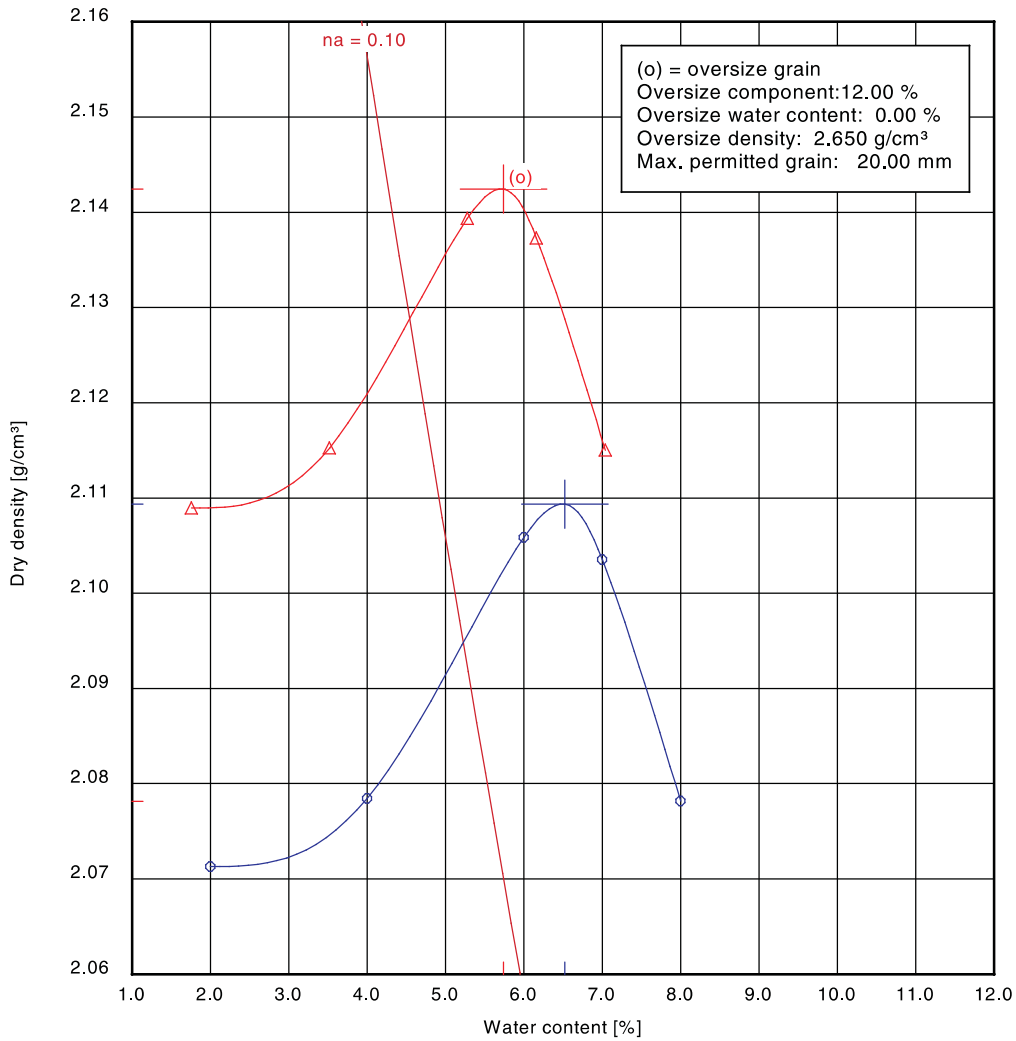
Proctor curve

Example 1

Edited by: Buß

Date: 12.02.2002

Test number: 1
Sampling location: Axis A12
Depth: Base grade
Type of sampling: disturbed
Soil type: clay, silty
Sample taken on: 10.02.2002



(o) 100 % proctor density $\rho_{Pr} = 2.142 \text{ g/cm}^3$

Optimum water content $w_{Pr} = 5.7 \%$

(o) 97.0 % of proctor density $\rho_d = 2.078 \text{ g/cm}^3$

min/max water content $w = - / - \%$

(o) 95.0 % of proctor density $\rho_d = 2.035 \text{ g/cm}^3$

min/max water content $w = - / - \%$